



****AVAILABLE IMMEDIATELY****

****UNFURNISHED** **NEW CARPETS**

FITTED **PRIVATE OUTSIDE SPACE**** A well presented two bedroom first floor 'Tyneside' flat ideally located on Salters Road, Gosforth. Salters Road is perfectly placed close to the shops and amenities of Kenton Park Shops and Ashburton Road. It also has excellent transport links on Kenton Road and Salters Road providing easy access to Newcastle City Centre and beyond.



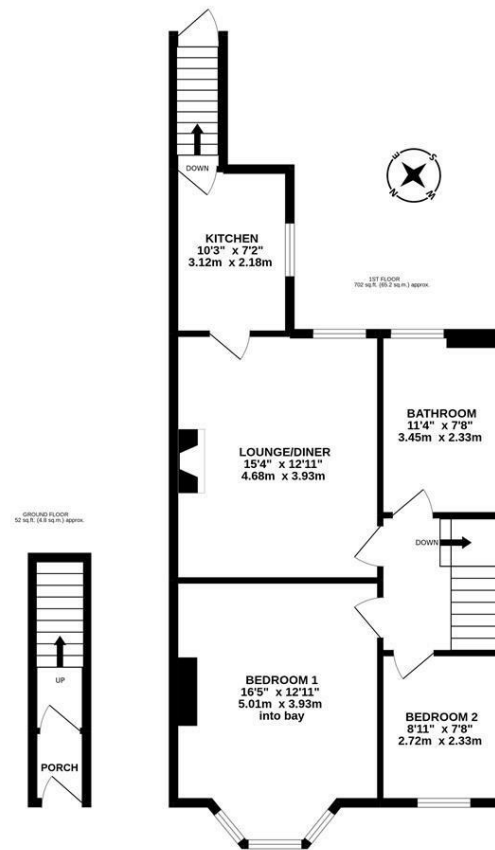
Found in a super location, the accommodation briefly comprises; entrance porch through to hall with stairs to first floor landing; lounge/diner measuring 15ft, with alcove shelving and laminate flooring; kitchen with fitted units, work surfaces and appliances; rear stairway providing access to the private rear yard; generous bathroom complete with four piece suite and spot lighting; two bedrooms, bedroom one measuring 16ft with walk in bay and ceiling rose, bedroom two a smaller double which could alternatively be used as a study or preferred. Externally, a private rear yard laid to gravel with fenced boundaries and gated access. Also with on street parking to the front.

With brand new fitted carpets on stairs, landing and bedrooms, gas central heating and double glazed windows throughout. Available on an unfurnished basis and ideal for professionals, this property is not to be missed!

Available Immediately | £900pcm | First Floor 'Tyneside' Flat | Unfurnished | 753 Sq ft (70 m2) | Two Bedrooms | Brand New Carpets | Lounge/Diner | Kitchen | Generous Bathroom with Four Piece Suite | Private Rear Yard | GCH & DG | Great Location | Close To Public Transport Links | Council Tax Band: A | GCH & DG | EPC Rating: C

£900 PCM

IMPORTANT NOTE: These particulars and the descriptions and measurements herein do not constitute representation and whilst every effort has been made to ensure accuracy, this cannot be guaranteed.



TOTAL FLOOR AREA: 753 sq.ft. (70.0 sq.m.) approx.
Whilst every attempt has been made to ensure the accuracy of the floorplan contained here, measurements of doors, windows, rooms and any other items are approximate and no responsibility is taken for any error, omission or mis-statement. This plan is for illustrative purposes only and should be used as such by any prospective purchaser. The services, systems and appliances shown have not been tested and no guarantee as to their operability or efficiency can be given.
Made with Metropix ©2022

